

Treatability of Organic Emerging Toxicants in Urban Stormwater Runoff

Robert Pitt¹, Ph.D., P.E., BCEE, D. WRE, and Shirley E. Clark², Ph.D., P.E., D.WRE

¹Cudworth Professor of Urban Water Systems, Department of Civil, Construction and Environmental Engineering, University of Alabama, Tuscaloosa, AL. email: rpitt@eng.ua.edu

²Associate Professor of Environmental Engineering, Environmental Engineering Program, Penn State Harrisburg, Middletown, PA. email: seclark@psu.edu

ABSTRACT

Bioretention has been promoted as a stormwater management technique that can reduce the loads of solids, heavy metals, and nutrients to surface waters. Many researchers have reported the treatment effectiveness of bioretention both in terms of percent removal and periodically in terms of effluent concentration. No studies, however, have evaluated the ability of carefully-selected bioretention media to treat pollutants to meet specific permit limits for certain organic toxicants and radionuclides. This project focused on the selection of a bioretention media mixture from pre-selected components – a granular activated carbon (GAC), two zeolites, two sands, and a peat moss – with the goal of treating numerous constituents, including dioxins, mercury, perchlorate, oil and grease, and radioactive components, along with numerous conventional constituents, to numeric permit limits. Two series of column tests, one focusing on long-term pollutant removal behavior and the other on the effect of depth/contact time on removal and using stormwater as the base test fluid, showed that a bioretention media containing a virgin coconut-hull granular activated carbon (GAC) was able to treat these constituents to the very low permit limits under a wide range of likely site conditions.

KEYWORDS

Urban stormwater treatment; biofiltration media; engineered natural treatment systems (ENTS); radionuclide; dioxin; perchlorate; mercury

INTRODUCTION

Bioretention is becoming more widely adopted in stormwater management strategies because of its well documented potential, if designed to address site conditions and maintained properly, to reduce the water volume and the loads of nutrients, metals, and solids reaching receiving waters. Many researchers have published extensive results on the performance of bioretention for these pollutants, and the results of a representative number of these studies are summarized in the International Stormwater BMP Database (www.bmpdatabase.org).

What has not been investigated thoroughly has been the performance of bioretention systems for organic toxicants and radionuclides. The studies that exist for organic toxicants and bioretention

media typically focus on the petroleum hydrocarbons, either individually or as a total, since these devices may be installed to treat runoff from gas stations, parking lots, etc. For example, DiBlasi et al. (2009) documented, in a soil-sand-organic matter bioretention cell, polycyclic aromatic hydrocarbon (PAH) event mean concentration (EMC) reductions of 31 to 99%, with a mean effluent event mean concentrations (EMCs) of 0.22 µg/L. When combined with the water volume reduction, the PAH loads were reduced by 87%. Other researchers who have looked at organics removal as a function of media characteristics in biofiltration/bioretention have found that PAH removals can be correlated directly with the hydrophobicity of the compound and the organic content of the media (Gasperi et al. 2010; DiBlasi et al. 2009; Jaradat et al. 2009; Clark and Pitt 1999). Perchlorate removal in stormwater also has not been documented in published studies. However, Morris (2009) reviewed three case studies where mulch was added to soil to improve perchlorate degradation in an anaerobic environment. This study supports the investigation of organic media to remove perchlorate from stormwater.

No published studies were located that focused on field-scale bioretention removal of radionuclides. Studies on the treatment of radionuclides such as uranium have focused primarily on membrane treatment methods (Van Tran and Shorr 1985; Badaway et al. 2005); biological uptake by microorganisms such as *Thiobacillus ferrooxidans* (DiSpirito et al. 1983); or advanced chemical treatment methods, such as modified treatment resins (Merdivan et al. 2001). The cited studies, even though they do not focus on bioretention, do indicate the potential for organic-based media to provide treatment of some radionuclides. Overall and Parry (2004) studied the uranium uptake by *Eleocharis dulcis* (Chinese water chestnut) in a mine wetland filter, indicating that an activated media, based on plant material, may have the potential to treat these compounds in stormwater runoff.

This paper presents the results of a study that evaluated several candidate bioretention media for their ability, either singly or in mixtures, to treat selected organic toxicants and radionuclides to specified effluent concentrations. The site for which these units are being designed is subject to a NPDES stormwater permit having very low numeric benchmark concentrations.

Site and Bioretention Information

The drainage areas for these bioretention units were described in Pitt et al. (2010). They consist primarily of steep catchments with significant open space, primarily chaparral habitat and exposed bedrock (generally sandstone). An additional feature of the project is that existing runoff concentrations for the pollutants of interest are generally below levels typically seen in most urban stormwaters, making it difficult to apply traditional stormwater treatment results from studies that have investigated more contaminated industrial and commercial stormwaters to order to predict whether bioretention effluent could meet the challenging permit limits.

Stormwater treatment systems initially proposed for the site mostly consisted of advanced engineered natural treatment systems (ENTS), which are treatment trains containing a combination of detention basins followed by bioretention filter basins (i.e., large, vegetated, vertical-flow, outlet-controlled media filters). The preliminary design goal was to treat 90% of the long-term runoff volume from drainage areas ranging from 5 to 60 acres at the site. The pollutants of most interest are those that have periodically exceeded the numeric discharge benchmarks and include cadmium, copper, lead, and dioxins. This paper will focus on a subset of

the pollutants contained in the discharge permit: oil and grease, perchlorate, dioxin (TCDD), gross alpha and gross beta radioactivity, strontium-90, uranium, and tritium.

Candidate Bioretention Media

The media examined were composed of six materials singly and in combinations: a rhyolite sand, a granular activated carbon (GAC), a surface-modified zeolite, a zeolite currently used on the site, a filter sand used on the site (all supplied by the client or client's representative), and a sphagnum peat moss. The column tests examined each of these six materials separately, along with four mixtures of these components. Past research by Clark (2000) had shown that while sand was not completely inert, comparatively it was a much poorer treatment medium compared to modified sands, zeolites, carbons, and organic-based media such as peat and compost. Sand, though, often had to be added to the other media in order to control flow rates through the media, which was done in this study in the columns that evaluated the candidate media individually. Therefore, the site filter sand was mixed with the treatment media 50/50 v/v in those column tests, in addition to being evaluated by itself.

Tables 1 and 2 provide the physical properties of the media individually and in the mixtures that were examined as part of this project. As can be seen from Table 1, with the exception of the peat moss, the candidate media are uniformly graded with uniformity coefficients ranging between 1.5 and 2.5. The peat moss is classified as well-graded, having a large range of particle sizes, with a uniformity coefficient greater than 7. Table 2 provides additional information on several of the media, including the composition of the rhyolite sand and the fact that site filter sand and site zeolite were selected because they were approved already for treatment operations on the site. Table 3 shows the porosities and bulk densities for the candidate media and mixtures. In general, the porosities ranged between 30 and 50%, as would be expected for uncompacted filter media. The highest bulk density was for the sand itself. The other mixtures had smaller bulk densities since the proportion of sand was reduced, compared to the 100% sand column. Unlike the other columns, the layered S-Z-GAC (sand-zeolite-GAC) column was not mixed and each medium was added to the column by itself, without the hydraulic modifier of sand. Because sand was not the lower media layer, the sand did not act as a restricting layer. Had the layer order been reversed, it is possible that sand would have increased the contact time in the zeolite media above it. Therefore, flow rates through the GAC and zeolite were rapid compared to the flow through the sand layer.

MATERIALS AND METHODS

Description of Media Testing

Prior research has shown that a targeted suite of controlled laboratory tests can evaluate the potential effectiveness of filtration/biofiltration media for stormwater runoff treatment. These tests, which were conducted as part of this research, include standard column tests to determine flow rates, breakthrough capacity, clogging problems, and general contaminant removal; contact time and media depth tests to optimize depth as a design parameter; traditional isotherm and kinetics tests to determine the contaminant retention in the media as a function of contact time; and aerobic and anaerobic retention tests to determine whether pollutant retention is permanent under changing pore water chemistry conditions. Because of the analytical expense of measuring

these pollutants in the influent stormwater and in the treated effluent, long-term full-depth column breakthrough tests for the pollutants of interest were conducted only using the four mixed-media columns for dioxin and the radionuclides (radium, uranium, strontium, etc.). Only mercury, perchlorate, and oil and grease were investigated during the varying-depth column tests, which targeted the contact time/media depth removal relationships.

Table 1. Description of Media Tested

Media	Manufacture's description	Bulk density	median particle size (D ₅₀) (mm)*	uniformity coefficient (D ₆₀ /D ₁₀)**
Granular Activated Carbon (GAC)	VCC 8X30 Virgin Coconut Shell Activated Carbon (Baker Corp.)	29 lbs/ft ³ (1.8 to 2.1 g/cm ³)	1.45	2.13
Rhyolite Sand (R)	D1 biofilter media sand (Rhyolite Topdressing Sand) from Golf Sand, Inc., North Las Vegas, NV	1.28 g/cm ³	0.39	1.79
Site Zeolite (Z)	Z-200 Modified Zeolite (Baker Corp.)		2.9	1.55
Surface Modified Zeolite (SMZ)	14-40 Saint Cloud Zeolite with 325 µm Modified Zeolite at 3% Vol:Vol		0.73	2.35
Sphagnum Peat Moss (PM)	Purchased from nursery in Elizabethtown, PA		0.60	7.31
Site Filter Sand (S)	Fine textured silica sand from source local to project site		0.95	2.3

* measured in UA soils lab using standard 8 inch sieves and shaker

** calculated based on the measured particle size distribution; uniformity coefficient <5 indicates a very uniform medium; 5 is moderate uniformity; >5 indicates a well-graded and non-uniform medium

Table 2. Porosity for Test Mixtures Measured in Lab

Full-Depth Column Tests – Candidate Individual Media	Porosity	Bulk Density (g/cc)
SMZ (with 50% Filter Sand)	0.40	1.35
R (w/ 50% Filter Sand)	0.36	1.48
PM (w/ 50% Filter Sand)	0.50	0.93
GAC (sub) (w/ 50% Filter Sand)	0.32	1.21
Z (w/ 50% Filter Sand)	0.35	1.24
Sand	0.32	1.66
Full-Depth Column Tests – Candidate Mixtures		
R-SMZ-GAC (1/3 each)	0.41	0.94
R-SMZ-GAC-PM (30% R, SMZ, GAC; 10% PM)	0.43	0.87
R-SMZ (75% R, 25% S)	0.43	1.23
Layered (S-Z-GAC)	N/A	1.00
Additional Mixture used in Varying Column Depth Tests		
GAC (2/3 Sand, 1/3 GAC)	0.36	1.25

Of the pollutants described in this paper, only mercury, oil and grease, and perchlorates were added to the previously-collected stormwater runoff from the campus of Penn State Harrisburg. The dioxins and radioactive constituents were not added to the naturally occurring campus runoff due to safety issues. The background concentrations, while typically not above the permit limits, were measurable for most of these constituents, except strontium, and pollutant removal

evaluations could be made. In fact, these lower background concentrations in the influent were preferable since Clark (2000) showed that there may be lower limits to removal for filtration media and the challenging influent concentrations aided in evaluating whether the media could remove these pollutants to low levels.

Removal to Chemical Breakthrough Tests. In these traditional long-term column tests, the media were subjected to intermittent stormwater flows over several months. The primary information from these tests included the following: treatment flow rates, pollutant removal, and clogging/maintenance requirements. The results of the clogging and maintenance tests can be found in Pitt et al. (2010), and the full technical report has been posted at: http://www.boeing.com/aboutus/environment/santa_susana/tech_reports.html. The test water used during these investigations was a modified stormwater. The collected runoff water was modified for each day's experiments for some of the constituents of interest to increase their concentration to a target at about the 90th percentile concentration levels seen in the runoff water from the site. Most of these targeted concentrations are substantially lower than the industrial wastewater and artificial stormwater concentrations used in many of the past tests of treatment media. The test results reported here confirm the ability of these media to treat runoff at relatively low influent concentrations over time. The challenge stormwater also contains a mixture of constituents/pollutants that may affect the treatment performance of the media, again in contrast to traditional media tests that only examine individual contaminants at a time. The set-up of the test columns is described in Pitt et al. (2010).

At the start of each testing day, approximately 200 L of stored stormwater were transferred to the day tank after the storage tank was mixed for at least 20 minutes. Spike chemicals were added to the day tank to create the targeted concentrations as described above. The day tank was then stirred to aid equilibrium and dissolution of the spiked constituents. While the spike salts were selected based on solubility, based on the analytical results, several spikes did not dissolve or were emulsified to a large extent in the water. Examples include oil and grease spikes, where the concentrations were recovered in the unfiltered water analysis, but very little was recovered in the filtered fraction. For oil and grease, little was recovered in the initial analyses, although a sheen was seen on the top of the tank water and the water pumped to the columns appeared to have oil drops mixed in the water, similar to what is seen in typical stormwater for the relatively low levels of oil and grease seen.

A TeflonTM cone splitter (USGS/Dekaport) was used to distribute water evenly among the 10 columns. Because of the nature of the test water, a bilge pump was used to transfer test water from the day tank to the cone splitter. Water was pumped to the column until the water level on top of the column reached a level of 15 cm above the media. This corresponded to the maximum ponding depth expected in the field. After the media was saturated each day and a steady flow was achieved, the treatment flow rate was measured by collecting a volume of water in a small clean container and measuring the time it took to collect the volume with a stopwatch. Columns were refilled once the water level dropped to the level of the top of the media. The time that the pump was on was recorded using a stopwatch. When the flow rate dropped below 5 m/day, the top of the media was disturbed. When disturbing the media no longer benefited the flow rates, the top 0.025 – 0.05 m of media were removed from the affected column.

Separate effluent water samples were collected after treatment in each column for the analysis of the constituents listed in Table 3. Samples were collected on the first day, and then periodically throughout the testing period. Influent water was collected from one of the tubes distributing water to the columns.

Short-Term Contact Time Depth Breakthrough Tests. The purpose of this series of tests was to investigate the impact of media contact time on pollutant removal. Contact time was controlled by adjusting the media depth in the columns. These tests involved intermittent loading of the filter columns for five sampling days (to approximately 20 m of volumetric loading, depending on the flow rate through the media). These tests were performed in two separate filtering setups. For each test setup, twelve columns were constructed as described in the prior section. Two columns of each media or mix were 0.97 m in depth, one was 0.66 m and one was 0.36 m. The first test setup investigated the effects of media depth on pollutant removal for the mixes R-SMZ, R-SMZ-GAC, and R-SMZ-GAC-PM (see Table 3 for percentages of each component in the mixture). The second test setup investigated the same effects, but for three media components separately (each were mixed with 50% by volume with the site sand for hydraulic purposes, as described earlier): GAC, PM, and SMZ. These media components were selected based on the testing results from the long-term tests.

Analytical Methods

Table 4 lists the analytical methods used during this project for the pollutants of interest for this paper. The limits of detection routinely obtained are all well below the site benchmark limits, except for mercury which was somewhat higher than the associated limit.

RESULTS AND DISCUSSION

For the long-term chemical breakthrough testing, the tests were performed using a 0.97-m media depth for the mixtures described in Table 3. Because of the analytical expense, these parameters were only analyzed three times during the test period. Because of initial problems in spiking suitable concentrations of oil and grease, mercury and perchlorates into the water during the long-term column tests, these three constituents were also examined during the contact time column tests where different depths of media (0.97, 0.66, 0.36 m) were examined for their effectiveness. The first constituents discussed in this section will be those that were analyzed only during the long-term column breakthrough testing, followed by the other constituents.

Dioxin. Figure 1 shows the breakthrough curve for dioxin when treated using the mixed-media columns. When the influent had a comparatively high concentration of TCDD, all media were effective and, after the first sampling event, were below the permit limit of 2.8×10^{-8} $\mu\text{g/L}$ for all media. The media that tended to have the best performance were those with the larger amounts of GAC (R-SMZ-GAC and Layered S-Z-GAC). Literature-reported K_{ow} values for dioxins typically exceed 10,000, indicating that dioxins are hydrophobic and should have a strong affinity for carbon media. The comparatively-high initial result for the effluent of the R-SMZ-GAC-PM column was unexpected since it was anticipated that the peat moss would add an additional source of carbon for dioxin uptake. Studies on PAHs have indicated that peat moss can provide excellent removals for hydrophobic compounds. It is possible that, since peat moss is a natural media and background dioxin contamination has been documented throughout the

world, the peat moss had been contaminated with dioxin and this result reflected a flushing out of small media particles that contained dioxin. However, this was not investigated and the source of the high initial effluent concentration is unknown.

Table 4. Analyses Supporting Media Tests

Test Constituent	Method Number	Limit of Detection (LOD)	Site Benchmark Permit Limit
Oil & grease ^{1, 2}	EPA 1664	2.1 mg/L	15 mg/L
Mercury ¹	Standard Methods 3500-Hg.B cold vapor fluorescence	0.2 µg/L	0.13 µg/L
TCDD ¹	EPA 1613	6.3 x 10 ⁻⁷ µg/L	2.8 x 10 ⁻⁸ µg/L
Perchlorate ³	EPA 314.0	4 µg/L	6 µg/L
Gross alpha radioactivity ¹	EPA 900	1.2 pCi/L	15 pCi/L
Gross beta radioactivity ³	EPA 900	2.0 pCi/L	50 pCi/L
Tritium ³	EPA 906	180 pCi/L	20,000 µg/L
Uranium ³	ASTM 5174	0.29 µg/L	20 pCi/L
Strontium-90 ³	EPA 905	1.2 pCi/L	300 pCi/L
Radium 226+228 ³	EPA 903 (Radium 226) and EPA 904 (Radium 228)	0.6 pCi/L	5 pCi/L

Footnotes:

- 1: constituents in untreated stormwater that may periodically exceed permit limit >1% of the time over long monitoring periods
- 2: constituents that likely affect performance of media in removing contaminants
- 3: other constituents listed on permit, but are expected to rarely, if ever, exceed limits over a long period

The results (Figure 1) showed that none of the media exhibited breakthrough during the test duration. Effluent concentrations remain constant and low throughout the testing period. Therefore, these can be treated as independent observations of filter performance (see full justification for this approach in Clark, 2000) and statistical comparisons of influent versus effluent can be performed. A paired sign-test (nonparametric since the underlying data distribution is unknown) showed that only the R-SMZ-GAC and Layered S-Z-GAC columns had statistically-significant concentration differences between the influent and effluent at a significance level of 0.05 for these few data observations. These results indicate that, especially given the very small sample size, this GAC added to bioretention media can remove dioxin to below the permit limits and detection limits through at least 60 to 80 m of volumetric loading.

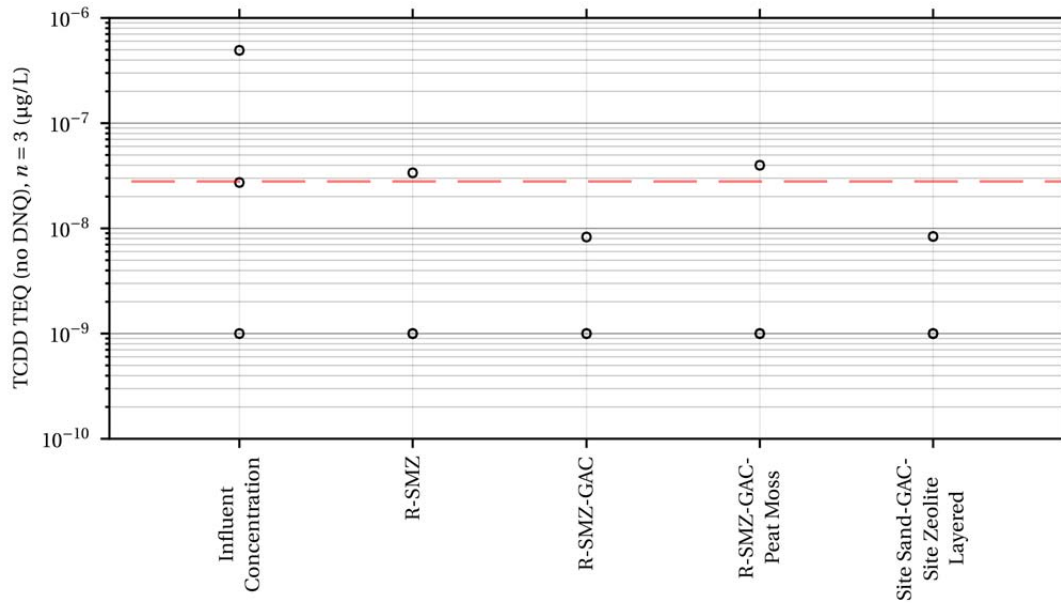


Figure 1. Dioxin (Total TCDD) Results for Bioretention Media Mixtures (red dashed line is permit limit; all samples at 1×10^{-9} µg/L reading were below MDL).

Gross Alpha and Gross Beta Radioactivity. Figure 2 shows the breakthrough curves for gross alpha and gross beta radioactivity. All of the media mixtures were able to reduce gross alpha radioactivity to the analytical detection limits. Since breakthrough was not observed during this test, the three measurements for each medium can be considered independent observations, *i.e.*, the effluent concentration does not appear to be influenced by the amount previously removed by the media. A paired sign-test showed that statistically significant removals occurred in each mixture. However, these removals were not seen for gross beta radioactivity (Figure 5). These results show that the mixture with 10% peat moss appeared to break through when between 60 and 80 m of cumulative stormwater was loaded on the media. The mixtures with GAC had poorer performance than the R-SMZ mixture, which contained no GAC. These results illustrate the trade-offs that may have to be made when selecting a bioretention media to address multiple constituents, and illustrate why testing of only the pollutants of specific interest and not understanding the exchanging ions' effect can result in the release of undocumented problems, potentially at levels of concern.

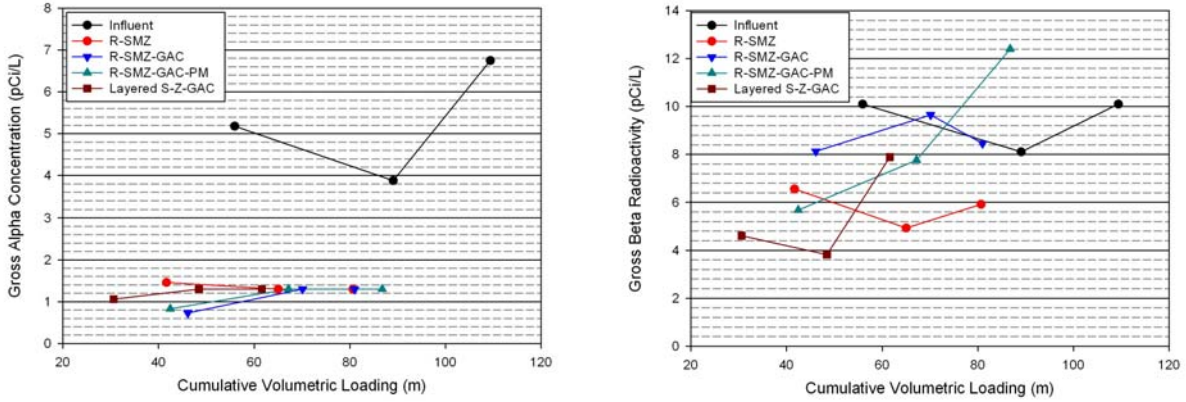


Figure 2. Gross Alpha and Gross Beta Radioactivity Breakthrough Curves.

Uranium, Tritium, Strontium, Radium 226+228. In the case of tritium and strontium, removal abilities for these media mixtures could not be determined because both the influent and effluent concentrations were below the detection limits for all samples. All media mixtures were able to remove uranium, as shown in Figure 3, although it appears that the mixture with peat moss reached breakthrough at between 60 and 80 m of cumulative stormwater loading and the layered S-Z-GAC had an initial sample whose effluent was greater than the influent. Because replicate columns were not tested and sample numbers are small, it is unknown whether the higher layered effluent reading was a valid result. For radium 226+228, with the exception of the mixture containing peat moss, the variabilities of the influent and effluent sample concentrations were large enough to overshadow any removals occurring in the media mixtures. For the R-SMZ-GAC-PM mixture, the effluent radium 226+228 averaged about 0.18 pCi/L, compared to average influent concentrations of about 0.92 pCi/L.

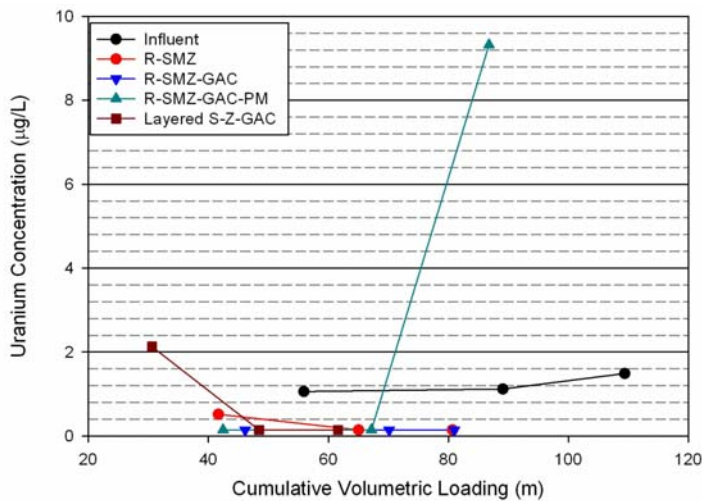


Figure 3. Uranium Breakthrough.

Mercury, oil and grease, and perchlorate were analyzed both during the long-term column breakthrough testing and during the investigation of contact time, as controlled by media depth. In the breakthrough testing, these pollutants were analyzed three times, similar to the pollutants described above. In the column contact time testing, they were analyzed only once per column at the end of the experiment. The end of the column contact time experiment correlated with approximately 20 m of stormwater loading. The contact column experiments were performed on both a subset of component media and on the mixtures described above, except for the layered S-Z-GAC media.

Mercury. The results showed that all media mixtures were able to provide excellent removal of mercury. A paired sign-test showed that the removals were statistically significant at $\alpha < 0.05$. Figure 4 shows the contribution to the removals for each of the potentially chemically-active media components, along with the effect of depth on the removal ability. For the potential mixture components, GAC may have slightly better removal ability, but it is not substantially different from the surface modified zeolite or the peat moss. For all three potential mixture components, an increase in column depth resulted in a decrease in effluent concentrations. However, for the mixtures themselves, the depth of the column had little effect on the removal ability, as all effluent samples had non-detectable mercury concentrations. This was likely due to the fact that the measured influent concentrations of mercury were much smaller during these mixed media tests than in the component tests or the long-term breakthrough tests. These influent concentrations also were at or near the detection limits, which ranged between 0.20 and 0.30 $\mu\text{g/L}$ during the tests. These results, though, do agree with the results of the column breakthrough testing, where the mixture composition did not impact the significant removal of the mercury.

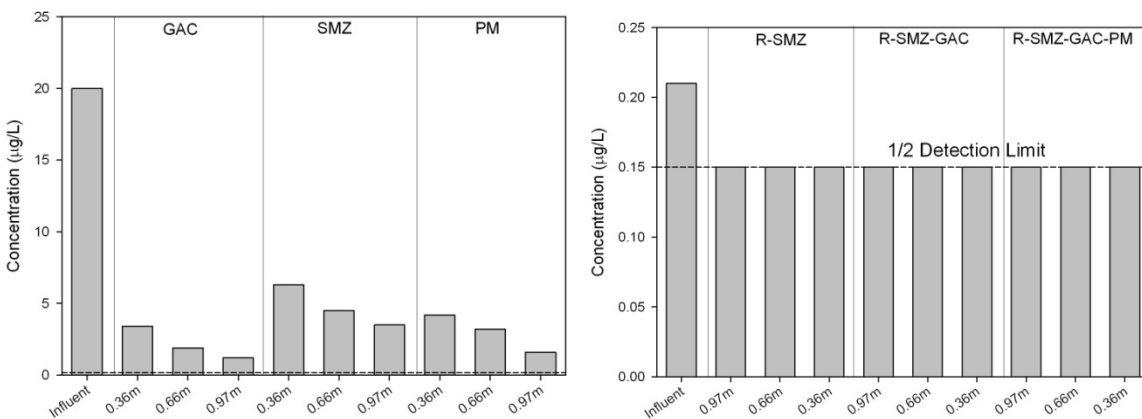


Figure 4. Mercury Influent and Effluent Concentrations for Media Mixture Components (left) and Mixtures (right).

As indicated by the results for the long-term breakthrough and mixture component testing, if the influent mercury concentrations are high, then the media may not be able to meet the low discharge benchmark value. However, the peak mercury concentration observed at the site has

only been slightly greater than 0.2 µg/L, so the media tested are likely to reduce this low influent value to concentrations less than the benchmark value of 0.13 µg/L.

Oil and Grease. All of the media containing GAC during the long-term breakthrough column tests, except for the layered S-Z-GAC, were able to treat the influent oil and grease down to the analytical detection limits. However, two out of the three influent samples also had concentrations at the detection limits due to problems associated with spiking oil and grease to the influent water. Figure 5 shows the treatability of oil and grease by the components and media mixtures as a function of column depth. For oil and grease, the depth of the column was not a factor in removals, as all of the effluents were below the detection limits, with all of the component media and mixtures able to provide excellent removals of oil and grease. Based on the literature, it would be expected that oil and grease may be preferentially removed by the GAC and peat moss because of their organic content. However, the R-SMZ mixture performed equally as well.

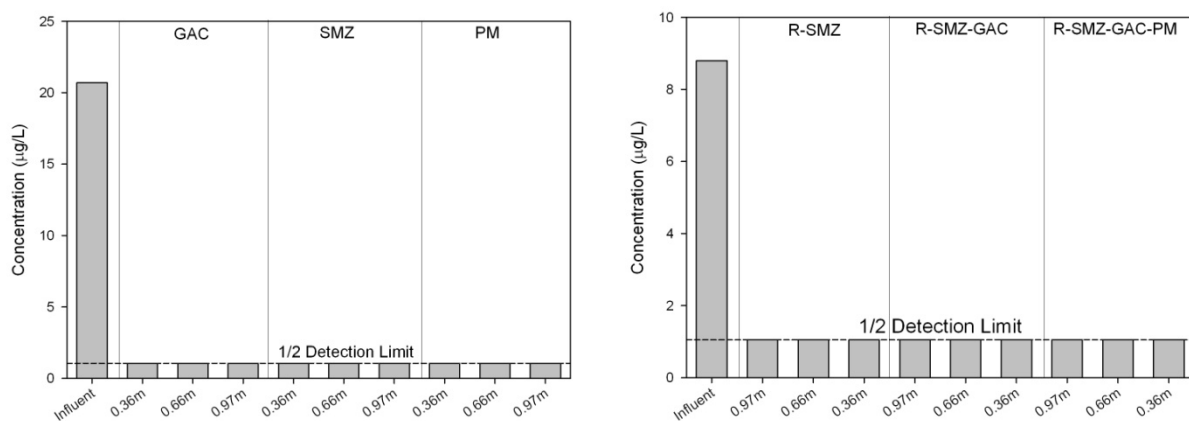


Figure 5. Oil and Grease Component and Mixture Contact Time Evaluations.

Perchlorate. In the long-term column breakthrough testing, the added perchlorate was not recovered in the influent and the concentrations were therefore too low to measure or evaluate. However, perchlorate removals were measureable and evaluated using the varying depth column tests. Unlike dioxin, perchlorate is highly water soluble and has a low K_{ow} . It would be anticipated that its primary removal mechanism would be through ion exchange or anaerobic degradation, if the media had the opportunity to develop microanaerobic zones between storm events, and not through uncharged-ion reactions with the media surface. Perchlorate is a negatively charged ion (valence charge of -1) and it would be expected to be removed by media with anion exchange capacities. Anion exchange capacity was not measured during this study and it is not measured typically in any study of pollutant treatability using media filters, but the results indicate that GAC may have a measurable anion exchange capacity or that its ability to participate in van der Waals interactions with perchlorate enhanced its removal ability.

For the GAC alone (with the site sand), the effluent concentrations were all below the detection limit. For the media mixtures, both the R-SMZ and R-SMZ-GAC columns were also able to treat

perchlorate to the detection limit. Since SMZ showed minimal removal ability in the components' testing, this result was unexpected. Rhyolite was not tested for perchlorate as an individual component, so it is not known if the rhyolite was the source of the removal. However, given the poor removals in the mixtures containing rhyolite and peat moss, it is not anticipated that the rhyolite was a substantial contributor to treatability.

The advantage to analyzing for a suite of pollutants, rather than just the targeted ones, is that other issues that affect design may become apparent. In addition to the pollutants described in this paper, the influent and effluent were also analyzed for more conventional parameters, with the results reported in Pitt et al. (2010). Clark and Pitt (2010) and Pitt et al. (2010) review the trade-offs in potential pollutant removal when selecting bioretention media and highlight the limitations of studies that do not investigate these trade-offs.

Summary of Findings:

The following are the major findings from these tests:

- When the influent had a comparatively high concentration of TCDD, the removals by all media were excellent and generally were below the very low permit benchmark limit of 2.8×10^{-8} $\mu\text{g/L}$ for all media tested. The media that tended to have the best removal performance of TCDD were those with the higher amounts of GAC in the mixture.
- All of the media mixtures were also able to reduce gross alpha radioactivity to the analytical detection limits, but gross beta radioactivity removals were not, with removals seen only for the layered S-SMZ-GAC and for the R-SMZ mixtures.
- All media mixtures were able to remove uranium, although the mixture with peat moss reached breakthrough at volumetric loadings of 60 – 80m.
- All media mixtures were able to provide excellent removal of mercury. Increases in column depth resulted in decreased effluent mercury concentrations.
- All of the media containing GAC during the long-term breakthrough column tests, except for the layered S-Z-GAC, were able to treat the influent oil and grease down to the analytical detection limits. This likely is due to the rapid contact time in the layered filter where the GAC was not mixed with a hydraulic modifier such as sand.
- For the GAC alone (with the site sand), the effluent concentrations of perchlorate were all below the detection limit. For the media mixtures, both the R-SMZ and R-SMZ-GAC columns were also able to treat perchlorate to the detection limit.

These results highlight the need for the design of a bioretention system where permit limits are in place for multiple constituents to contain a media mixture with a variety of removal mechanisms.

CONCLUSIONS

This study showed that bioretention media, when carefully selected based on chemical properties of the pollutants and media, has the potential to remove organic toxicants, potentially down to very low permit limits. The results for mercury, oil and grease, and some of the radioactive constituents reinforced the result seen by many other researchers, that there is a lower limit to the removal ability when using stormwater treatment practices. As seen for most control practices, the most robust biofiltration media for the treatment of a broad range of stormwater constituents

to low concentrations would be a mixture of several components that offer complimentary treatment mechanisms.

REFERENCES

- Badawy, S.M.; H.H. Sokker; S.H. Othman; A. Hashem. (2005). Cloth filter for recovery of uranium from radioactive waste. *Radiation Physics and Chemistry*. 73(2):125-130.
- Clark, S.E.; R. Pitt. (2010). Integration of site and media characteristics to design (bio)(in)filtration systems. S.E. Clark, R. Pitt. *Proceedings, 2010 World Environmental and Water Resources Conference*. Providence, RI, May 16 – 20, 2010. American Society of Civil Engineers, Reston, VA. CD-ROM.
- Clark, S.E.; R. Pitt. (1999). *Stormwater Runoff Treatment: Evaluation of Filtration Media*. S. Clark and R. Pitt. EPA 600/R-00/010. U.S. Environmental Protection Agency, Water Supply and Water Resources Division, National Risk Management Laboratory. Cincinnati, Ohio. 405 pages.
- DiBlasi, C.J.; H. Li; A.P. Davis; U. Ghosh. (2009). Removal and fate of polycyclic aromatic hydrocarbon pollutants in an urban stormwater bioretention facility. *Environmental Science and Technology*. 43(2):494-502.
- DiSpirito, A.A.; J.W. Talnagi; O.H. Tuovinen. (1983). Accumulation and cellular distribution of uranium in *Thiobacillus ferrooxidans*. *Archives of Microbiology*. 135(4):250-253.
- Gasperi, J.; V. Rocher; S. Gilbert; S. Azimi; G. Chebbo. (2010). Occurrence and removal of priority pollutants by lamella clarification and biofiltration. *Water Research*. 44:3065-3076.
- Jaradat, A.Q.; K. Fowler; S. J. Grimberg; T.M. Holsen. (2009). Transport of colloids and associated hydrophobic organic chemicals through a natural media filter. *Journal of Environmental Engineering*. 135(1):36-45.
- Merdivan, M.; M. Zahir Duz; C. Hamamci. (2001). Sorption behavior of uranium(VI) with N,N-dibutyl-N'-benzoylthiourea impregnated in Amberlite XAD-16. *Talanta*. 55(3):639-645.
- Morris, K.A. (2009). Application of mulch biowalls – three case studies. *Remediation Journal*. 20(1):59-68.
- Overall, R.; D.L. Parry. (2004). The uptake of uranium by *Eleocharis dulcis* (Chinese water chestnut) in the Ranger Uranium Mine constructed wetland filter. *Environmental Pollution*. 132(2): 307-320
- Pitt, R.; S. Clark; B. Steets. (2010). Laboratory evaluations to support the design of bioretention systems in the southwestern U.S. *Proceedings, 2010 World Environmental and Water Resources Conference*. Providence, RI, May 16 – 20, 2010. American Society of Civil Engineers, Reston, VA. CD-ROM.
- Van Tran, T.; J. Shorr, (1985). Advanced membrane filtration process for treatment of uranium mill tailings wastewater. *Trans. Am. Nuclear Society*. 50:93-94.